

## K UNIT: WALL SLEEVE INSTALLATION MANUAL

### **IMPORTANT:**

### **READ AND SAVE THESE INSTRUCTIONS. INSTALLATION MUST BE IN ACCORDANCE WITH LOCAL AND NATIONAL BUILDING CODES.**

The standard wall sleeve is designed to be easily installed in a variety of wall constructions. If the wall projects past the wall sleeve measures must be taken to assure proper drainage past the outside wall surface, and to stop recirculation of condenser air. Test fit the sleeve in the opening before securing it to the wall. Sleeve must be square and must not bow due to improper opening dimensions if this happens the opening needs to be re-worked to allow proper installation.

### **Wall opening**

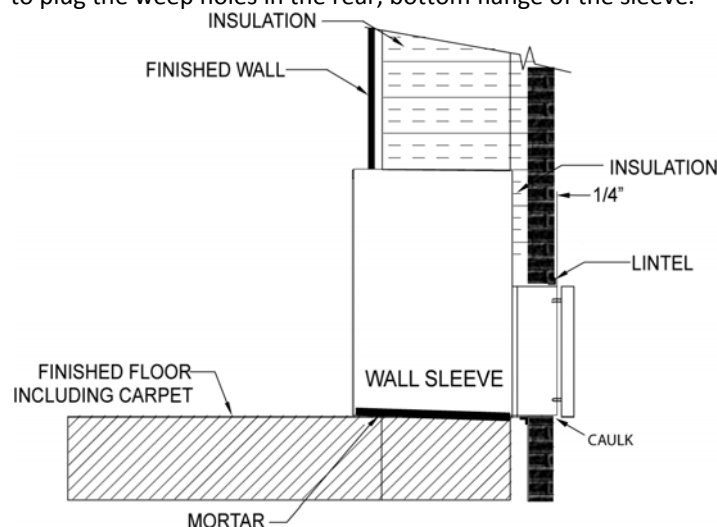
Before installing the wall sleeve, check the wall opening to ensure the sleeve will slide in unobstructed. The rough opening should measure 25" x 36 ½" indoor and 14 ½" x 36 ½" outdoor. The wall sleeve is not designed to support brick, proper lintels and supports must be installed before inserting the sleeve. The wall sleeve is designed to be mounted on the floor but may be located above the floor line to clear obstructions. Without modifications, the wall sleeve can be placed up to 1" above the floor. The standard adjustable kick plate can be extended to hide the space below.

### **Wall sleeve Installation**

The wall thickness will determine how much, if any of the wall sleeve will protrude into the room. The illustration below shows a typical installation in a frame and brick wall.

The recommended procedure for installing the K series wall sleeve is:

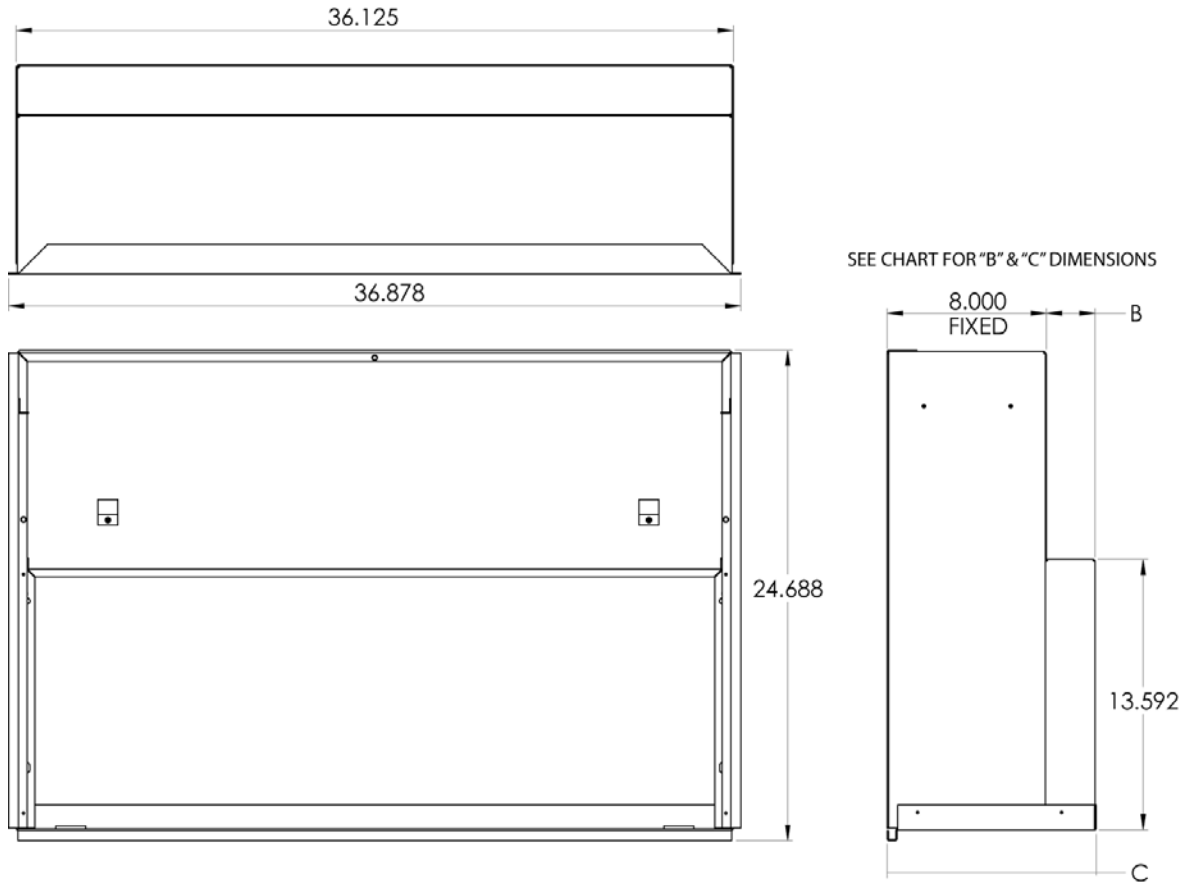
1. Clean the opening of all debris that may interfere with installation.
2. The room cabinet should be surrounded by insulation top sides and back as shown in figure 2 this will act as an insulator and sound deadener for the wall sleeve
3. Place a thin pad of mortar on the bottom of the opening to support the bottom of the sleeve. Push the sleeve through the wall opening so that a minimum of ¼" (6mm) projects past the outside wall. This will provide a fillet area for caulking (refer to Figure 2). The condenser section of the wall sleeve can be factory furnished from the minimum 2 ½" up to 10" to accommodate varying wall depths (see chart).
4. After the mortar has dried, remove the masonry support from the wall sleeve. NOTE: the wall sleeve is not intended to replace the lintel and must not be used as such.
5. Using the top edge, level the wall sleeve from side to side and then provide a slight slope (Maximum 1/8" per foot) in the direction from indoor to outdoor, to facilitate positive water drainage to the outdoor side. Anchor sleeve with appropriate fasteners. Drill holes as required to ensure sleeve is secured firmly. **CAUTION:** Do not drill holes in the base of the wall sleeve. Use shims between the wall and the wall sleeve to prevent wall sleeve distortion during anchoring.
6. Caulk the wall sleeve to the wall opening on both the inside and outside perimeter. This can be done from the inside of the building. Be careful **NOT** to plug the weep holes in the rear, bottom flange of the sleeve.



NOTE: for rooms with thick carpet the wall sleeve should be installed ½" above the concrete floor to facilitate future chassis installation and removal.

## Wall sleeve considerations.

The 8" dimension of the wall sleeve is fixed; dimension B can be factory furnished from 2 ½" up to 10" to accommodate varying wall thicknesses (see chart). The front of the wall sleeve should be at minimum flush with the finished interior wall and the outside edge of the wall sleeve should protrude a minimum of ¼" as in the illustration above to allow for a proper caulking bead to seal the sleeve on the outside face of the building. For walls, less than the minimum wall sleeve depth of 10 ½" the room enclosure can be made at varying depths to accommodate the sleeve protruding into the room see room enclosure manual for details.



EXAMPLE WALL DEPTH = 12" + ¼" OUTSIDE = TOTAL 12 ¼" AS PER CHART YOU WOULD REQUIRE A WALL SLEEVE MEASURING 13" (FIXED DIMENSION OF 8" + "B" DIMENSION OF 5" = "C" DIMENSION OF 13")

## Wall sleeve depth chart

FIXED	DIM "B"	DIM "C"
8"	2.5	10.5
8"	3.5	11.5
8"	4	12
8"	5	13
8"	6	14
8"	7	15
8"	8	16
8"	9	17
8"	10	18