

Job Name: _____

Purchaser: _____

Engineer: _____

Submitted To: _____

Submitted By: _____

Unit Designation: Schedule No.: _____

Location: _____

P.O. No.: _____

Architect: _____

Date: _____

For: ☐ Reference ☐ Approval ☐ Construction

Model No.: _____

Submittal Data: CDF PTAC



Standard Features:

Standard Warranty:

- One Year Full System Comprehensive Parts and Labor.
- 2nd to 6th Year Sealed Refrigerant System Parts Including Compressor.
- Shipping of Parts is covered to any location in North America during warranty period.
- Local factory support provided from factory in Cambridge, Ontario, Canada.

Optional Extended Six Year Warranty (Includes Standard Warranty Plus):

- 2nd to 6th Year Sealed Refrigerant System Labor.
- 2nd to 6th Year Comprehensive Parts Including Shipping Costs.

Factory Support:

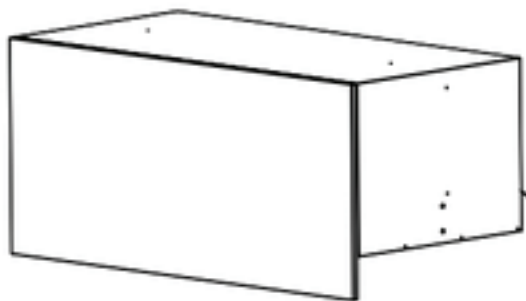
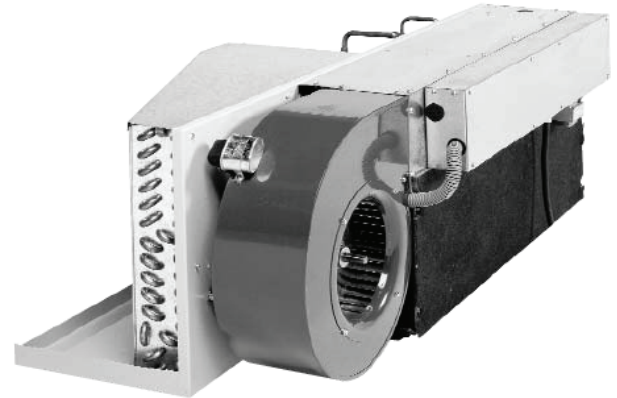
Made in Canada; -- This product is Engineered and Manufactured at Applied Comfort's UL and CSA inspected and approved facility, utilizing premium components. Warranty and technical support are provided directly from the factory in Cambridge, Ontario, Canada.

R-410A Refrigerant

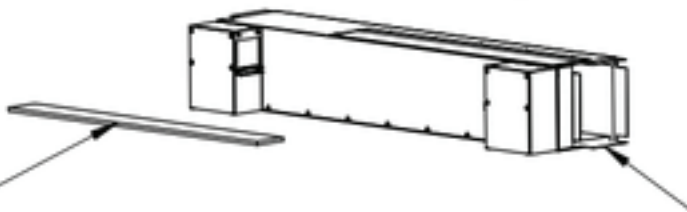
Chassis Design and Component Specifications:

Chassis design is updated from specification drawings acquired by Applied Comfort directly from Chromalox Corporation. This ensures exact specification components, and exact-fit of chassis into sleeves and ducted sub-base. This also ensures that any installation using these components will perform properly according to the original design and the modern performance specifications.

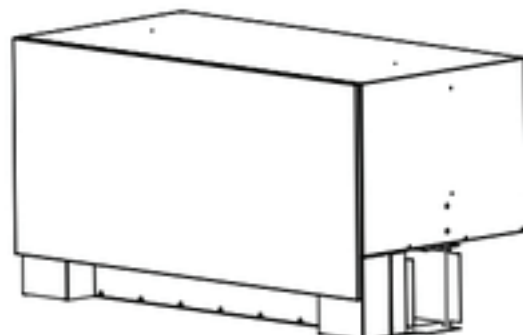
Combination room cabinet and wall sleeve is constructed of heavy-gauge, zinc-coated phosphatized steel. Original Chromalox blueprints are used to ensure exact fit. Powder paint finish provides maximum corrosion protection.



Combination Room Cabinet and Wall Sleeve, with Room Cover and Top Grille Assembly



Transition Cabinet Assembly with Washable Aluminum Filter



Condensor Blower:

Dual Inlet, High Static Pressure Blower Design.

Blower wheel -- Made in Canada -- Galvanized steel 6" wide by 9.5" diameter.

Blower Housing -- Made In Canada -- Satin-coat steel, phosphate dipped, and powder-coated blower housing for superior corrosion resistance.

Motor -- 8 pole PSC motor turning slowly (800 rpm) for quiet operation.

Condensate Removal -- non-clogging water pickup draws water onto the blower wheel. As blower wheel spins, small droplets are projected onto the condenser coil and evaporated.

Evaporator Blower:

Dual Inlet, High Static Pressure Blower - specifically designed for downflow ducted applications requiring

3/4" water-column static pressure. Galvanized blower wheel, Galvanized blower housing, 8 pole PSC motor rotating at 800 rpm for quiet operation.

UL Category 1 Components:

Ultra Quiet Operation.

Chassis configured as exact fit to original Chromalox sleeve, transition cabinet (sub-base), outlet grille, and room covers.

Transition Cabinet:

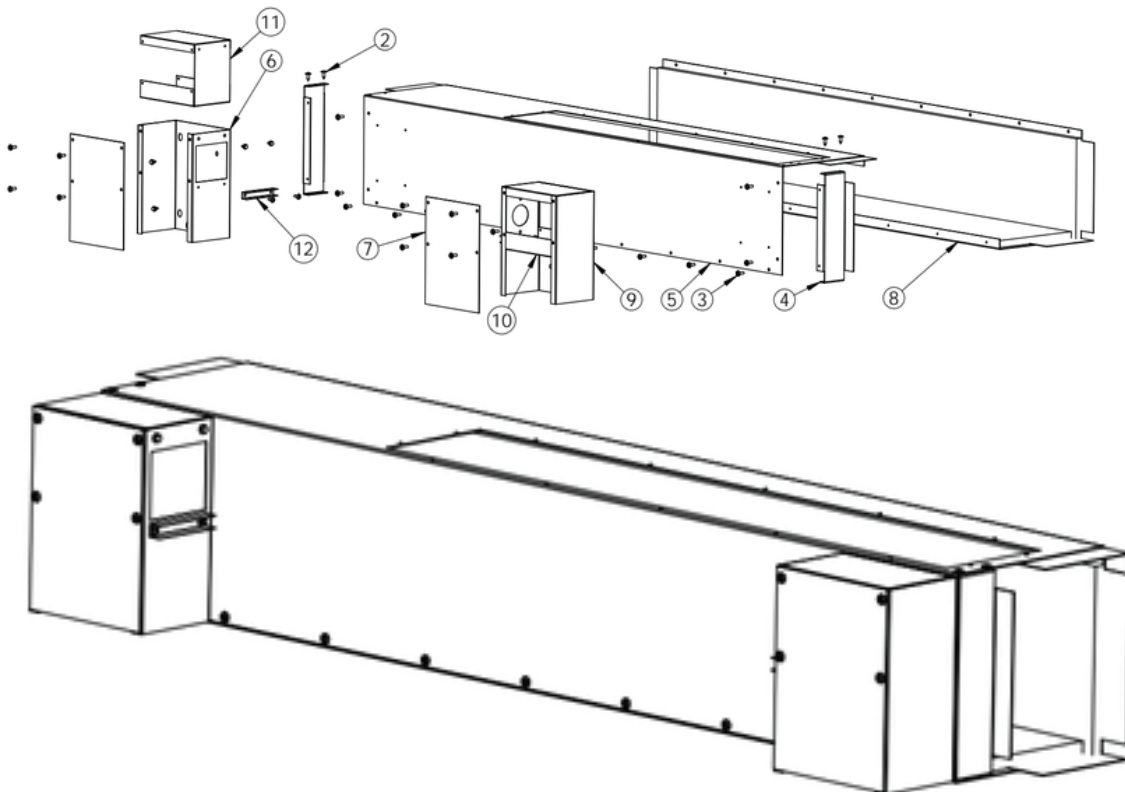
Manufactured according to original drawings obtained from Chromalox Corporation. Exact fit from original drawings ensures a proper seal between chassis, sleeve, and transition cabinet to the room ductwork.

Satin coat steel, phosphatized, and then powder-coated and baked for durable corrosion-resistant finish.

Air Filter:

A washable aluminum air filter is provided.

Transition Cabinet Assembly



Electric Heat:

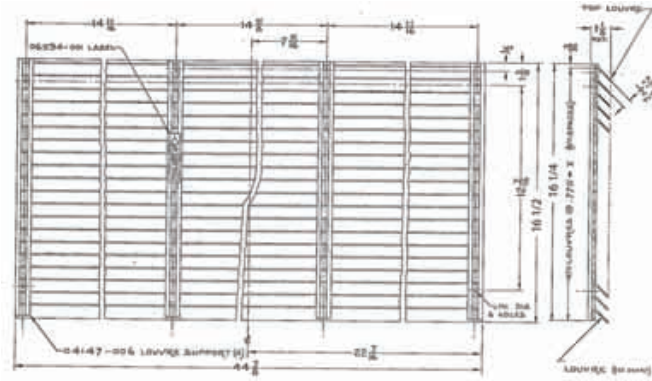
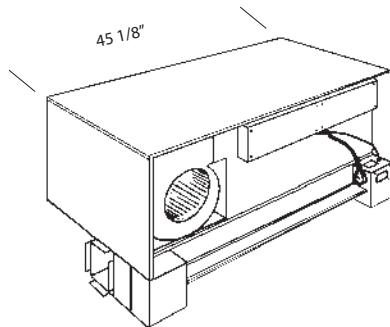
Two-stage heat is standard on units 4.5kW and above.

Heaters elements are manufactured in Canada under CSA certification.

Heating and Cooling functions are controlled by Wall Thermostat.

Aluminum Grille:

Extruded aluminum, anodized, architectural grille is supplied as exact fit to sleeve, manufactured according to original Chormalox drawings.



Product Specifications:

	CDFC	15	N	75	R
Chormalox Space Command SC-U-DF					
Replacement // Remplacement					
Electric Heat // Chauffage électrique					
Design // Conception C					
Nominal Cooling BTUH					
// Refroidissement en BTUH nominal					
12 = 12,000					
15 = 15,000					
Voltage // Tension					
N = 208					
P = 240					
Controls // Contrôles					
R = Dedicated Remote Wall Thermostat					
// Contrôlé par un thermostat mural					
Electric Resistance Heat kW					
// Puissance de chauffage kW					
00 = 0					50 = 5.0
20 = 2.0					55 = 5.5
25 = 2.5					60 = 6.0
30 = 3.0					65 = 6.5
35 = 3.5					70 = 7.0
45 = 4.5					75 = 7.5

Model // Modèle	Voltage // Tension	Hz	Cooling // Refroidissement				Heating // Chauffage			Fuse // Fusible Amps	Indoor SCFM // Intérieur Pi. ³ /min	Net Wt. // Poids net lbs.
			BTUH	EER // REE	Amps	Pts./hr. // Chop./h.	BTUH	KW	Amps			
CDFC12N25R	208	60	12500	9.3	6.3	3.8	8800	2.5	12.7	20	290	165
CDFC12N45R	"	"	"	"	"	"	15600	4.5	22.3	30	"	"
CDFC15N45R	"	"	15100	8.9	8	4.8	15600	4.5	22.3	"	320	"
CDFC15N65R	"	"	"	"	"	"	22500	6.5	31.9	40	"	"
CDFC15N75R	"	"	"	"	"	"	25900	7.5	36.7	50	"	"
CDFC12P20R	240	"	12700	9.1	6	3.8	7100	2.0	8.9	15	290	"
CDFC12P35R	"	"	"	"	"	"	12200	3.5	15.2	20	"	"
CDFC15P55R	"	"	15400	8.7	7.8	4.9	19100	5.5	23.5	30	320	"
CDFC15P75R	"	"	"	"	"	"	25900	7.5	31.8	40	"	"

Other heater sizes and cooling only models are available. Consult our website , or contact us directly for further information. // D'autres formats de fournaies et de modèles à refroidissement seulement sont aussi disponibles. Pour de plus amples renseignements, veuillez consulter notre site web, nos feuilles de données techniques ou communiquer avec nous directement.

