

Job Name: \_\_\_\_\_

Purchaser: \_\_\_\_\_

Engineer: \_\_\_\_\_

Submitted To: \_\_\_\_\_

Submitted By: \_\_\_\_\_

Unit Designation: Schedule No.: \_\_\_\_\_

Location: \_\_\_\_\_

P.O. No.: \_\_\_\_\_

Architect: \_\_\_\_\_

Date: \_\_\_\_\_

For: ☐ Reference ☐ Approval ☐ Construction

Model No.: \_\_\_\_\_

# Submittal Data: CDF PTAC



## Standard Features:

### Standard Warranty:

- One Year Full System Comprehensive Parts and Labor.
- 2nd to 6th Year Sealed Refrigerant System Parts Including Compressor.
- Shipping of Parts is covered to any location in North America during warranty period.
- Local factory support provided from factory in Cambridge, Ontario, Canada.

### Optional Extended Six Year Warranty (Includes Standard Warranty Plus):

- 2nd to 6th Year Sealed Refrigerant System Labor.
- 2nd to 6th Year Comprehensive Parts Including Shipping Costs.

### Factory Support:

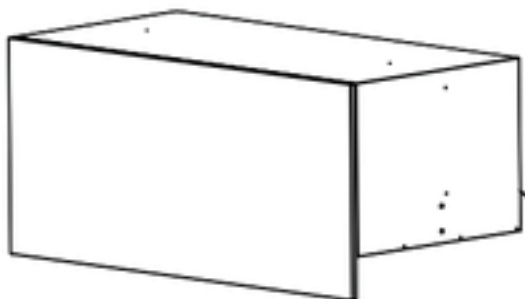
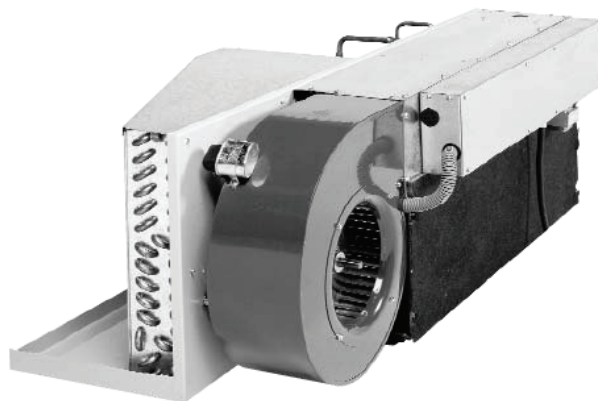
Made in Canada; -- This product is Engineered and Manufactured at Applied Comfort's CSA inspected and approved facility, utilizing premium components. Warranty and technical support are provided directly from the factory in Cambridge, Ontario, Canada.

### R-410A Refrigerant

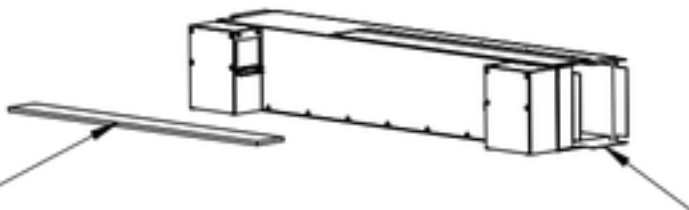
### Chassis Design and Component Specifications:

Chassis design is updated from specification drawings acquired by Applied Comfort directly from Chromalox Corporation. This ensures exact specification components, and exact-fit of chassis into sleeves and ducted sub-base. This also ensures that any installation using these components will perform properly according to the original design and the modern performance specifications.

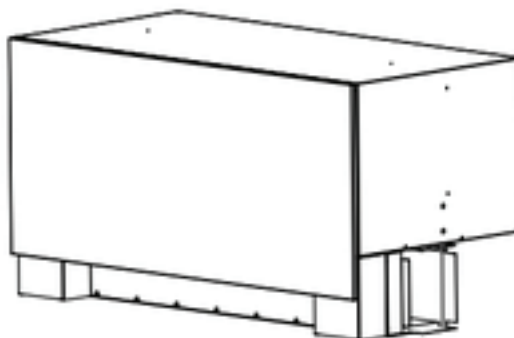
Combinaton room cabinet and wall sleeve is constructed of heavy-gauge, zinc-coated phosphatized steel. Original Chromalox blueprints are used to ensure exact fit. Powder paint finish provides maximum corrosion protection.



**Combinaton Room Cabinet and Wall Sleeve, with Room Cover**



**Transition Cabinet Assembly with Washable Aluminum Filter**



## Condenser Blower:

Dual Inlet, High Static Pressure Blower Design.

Blower wheel -- Made in Canada -- Galvanized steel 6" wide by 9.5" diameter.

Blower Housing -- Made In Canada -- Satin-coat steel, phosphate dipped, and powder-coated blower housing for superior corrosion resistance.

Motor -- 6 pole PSC motor for quiet operation.

Condensate Removal -- non-clogging water pickup draws water onto the blower wheel. As blower wheel spins, small droplets are projected onto the condenser coil and evaporated.

## Evaporator Blower:

Dual Inlet, High Static Pressure Blower - specifically designed for downflow ducted applications requiring

.15" water-column static pressure. Galvanized blower wheel, Galvanized blower housing, 6 pole PSC motor for quiet operation.

## Ultra Quiet Operation.

Chassis configured as exact fit to original Chromalox sleeve, transition cabinet (sub-base), outlet grille, and room covers.

## Transition Cabinet:

Manufactured according to original drawings obtained from Chromalox Corporation. Exact fit from original drawings ensures a proper seal between chassis, sleeve, and transition cabinet to the room ductwork.

Satin coat steel, phosphatized, and then powder-coated and baked for durable corrosion-resistant finish.

## Air Filter:

A washable aluminum air filter is provided.

## Transition Cabinet Assembly

