

## > The VTAC Series

The Applied Comfort VTAC designed for the new construction and replacement market, offers a cost-effective and space saving air conditioning and heating solution.

The discreet design and vertical housing allow the unit to be easily installed in a closet.

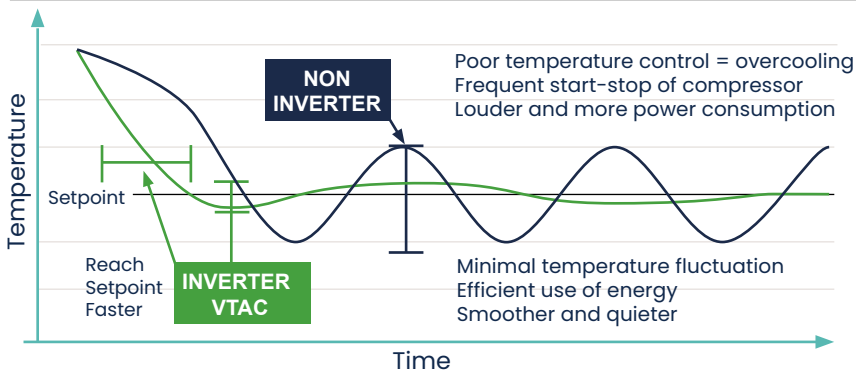
The VTAC comes as a small chassis (23 x 23 x 29") or a large chassis (22 3/4 x 24 3/6 x 47 1/8). Both chassis sizes require the ACC20DRAINPAN, and is paired with the appropriate depth wall plenum. The small chassis is offered in cooling ranges from 9000 bth/hr-15000 bth/hr (nominal sizing), while the large chassis is offered in 16000 bth/hr-24000 bth/hr (nominal sizing). The external air duct makes it ideal to provide heating and cooling for small rooms through to multi-room applications.

The unit is designed with brushless dc motors on both the indoor and outdoor side, along with an inverter compressor, which creates a more comfortable and quieter environment. The stepless fans offer more stable operation and allow individual users a more personalized air conditioning solution.

**Sleeve Size: 19 3/4 X 32"**



### Inverter VTAC: The Benefits of Inverter Technology

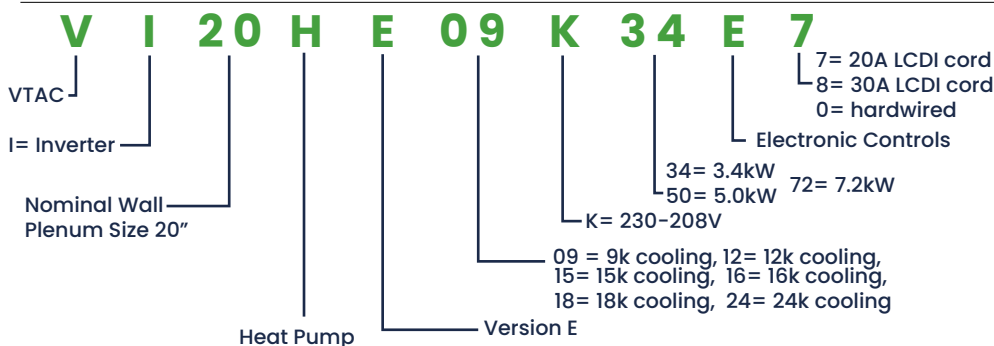


#### Non-inverter system

run the compressor at full RPM or zero RPM (on or off) – the on/off compressor cycling in part load conditions wastes substantial amounts of electric power

#### Inverter system

slow the compressor RPM to more closely match the part-load cooling or heating power required – a substantial reduction in power consumption occurs



#### Accessories

- Wall access panel with filter grille
- Architectural outdoor grille
- Return air filter grille for access door
- Wired or wireless thermostat (Required to operate)
- Wall plenums for various wall depths
- Drain pan kit

## Features

### Energy Efficient

SEER2 of up to 14.4 and HSPF2 up to 7.1, which fully meet the latest Department of Energy (DOE) high energy efficiency certification requirements. The variable speed inverter provides greater energy efficiency during part-load operation.

### Quiet Operation

The unit is designed with DC brushless motors on both the indoor and outdoor side, which creates a more comfortable, quieter environment with a stable operation.

### Easy to Configure

The unit interfaces with standard 24 VAC heat pump thermostat wiring/control logic.

### Front Desk Ready

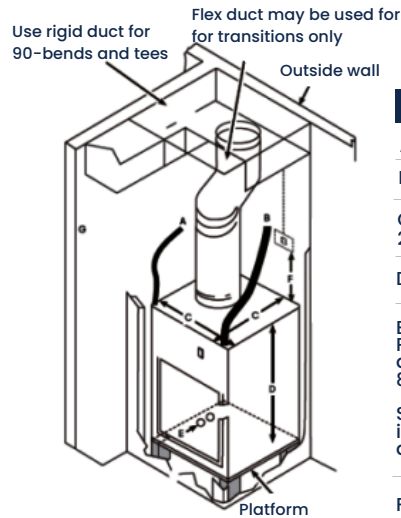
Front desk control through 24V control protocol.

### Comfortable Environment

Superior temperature control and dehumidification of room air, maintains a consistent and set temperature, ensuring maximum comfort.

### Room Freeze Protection

Automatically maintains room temperature above freezing.



#### Reference Dimensions

A Thermostat cable

B Power code: 60" long

C Case width and depth  
23-1/8"

D Case height: 31"

E Condensate drains: 3/4" connector  
Primary Drain-Centreline of cutout is approx. 5-1/4" from left case wall and 8-1/2" from back case wall.

Secondary Drain-Centreline of cutout is approx. 6-1/2" from left case wall and 5-1/4" from back case wall.

F Typical wall plug: 6/12" above case.

### Inverter VTAC with Heat Pump- Small Chassis

			VI20HE09K34E7	VI20HE12K34E7	VI20HE12K50E8	VI20HE15K34E7	VI20HE15K50E8
Power Supply		V/∅/Hz	230-208V/1/60	230-208V/1/60	230-208V/1/60	230-208V/1/60	230-208V/1/60
Cooling	Cooling Capacity @0.3inH2O	BTU/hr	9600	12600	12600	15000	15000
	Cooling Capacity Range(230V)	BTU/hr	5700-10000	5700-13000	5700-13000	7400-15300	7400-15300
	Input Power	Watts	870	1135	1135	1445	1445
	Current	Amps	4.4/4.0	5.4/4.9	5.4/4.9	7.4/6.7	7.4/6.7
	SEER2	SEER2	13.8	14.4	14.4	13.7	13.7
Heat Pump (@47F)	Heating Capacity @0.3inH2O	BTU/hr	9800	12300	12300	14300	14300
	Heating Capacity Range(230V)	BTU/hr	6000-10400	6000-12700	6000-12700	7300-14800	7300-14800
	Input Power	Watts	810	1115	1115	1310	1310
	Current	Amps	4.0/3.6	5.5/5.0	5.5/5.0	6.7/6.1	6.7/6.1
	HSPF2	HSPF2	6.6	6.5	6.5	6.4	6.4
Heat Pump (@17F)	Heating Capacity	BTU/hr	7500	7500	7500	9000	9000
	Input Power	Watts	1155	1155	1155	1300	1300
	COP	COP	1.9	1.9	1.9	2	2
Heat Pump (@5F)	Heating Capacity	BTU/hr	6900	6900	6900	7300	7300
	Input Power	Watts	1260	1260	1260	1250	1250
	COP	COP	1.6	1.6	1.6	1.7	1.7
Electric Heat	Capacity	BTU/hr	9400-11600	9400-11600	13900/17000	9400-11600	13900/17000
	Input Power	Watts	2.9/3.5	2.9/3.5	4.2/5.1	2.9/3.5	4.2/5.1
	Current	Amps	14.1/15.5	14.1/15.5	20.2/22.2	14.1/15.5	20.2/22.2
	Min Circuit Amps (MCA)	Amps	20	20	30	20	30
	MOP Fuse Amps	Amps	20	20	30	20	30
	Electrical Plug	NEMA	6-20P	6-20P	6-30P	6-20P	6-30P
Outdoor Ambient Temp	Cooling	°C	15-48	15-48	15-48	15-48	15-48
		°F	59-118	59-118	59-118	59-118	59-118
	Heating	°C	-15-27	-15-27	-15-27	-15-27	-15-27
		°F	5-81	5-81	5-81	5-81	5-81
Gross Weight	Shipping Weight	lbs	141	141	141	141	
Net Weight	VTAC Weight	lbs	128	128	128	128	
Sound	Indoor Sound Level (@230V)	dB(A)	48-63	48-63	48-63	49-63	49-63

# Inverter VTAC with Heat Pump- Large Chassis

			VI20HE16K50E8	VI20HE18K50E8	VI20HE18K72E0	VI20HE24K72E0
Power Supply		V/∅/Hz	230-208V/1/60	230-208V/1/60	230-208V/1/60	230-208V/1/60
Cooling	Cooling Capacity @0.3inH2O	BTU/hr	16400	18300	18300	22000
	Cooling Capacity Range(230V)	BTU/hr	8500-17000	8600-18600	8600-18600	10300-22400
	Input Power	Watts	1600	1890	1890	2400
	Current	Amps	7.8/7.1	9.2/8.3	9.2/8.3	11.6/10.5
	SEER2	SEER2	13.1	12.8	12.8	12.8
Heat Pump (@47F)	Heating Capacity @0.3inH2O	BTU/hr	16000	18000	18000	20000
	Heating Capacity Range(230V)	BTU/hr	9200-16500	11000-18700	11000-18700	11000-20800
	Input Power	Watts	1445	1640	1640	1885
	Current	Amps	7.1/6.4	8.0/7.2	8.0/7.2	9.2/8.3
	HSPF2	HSPF2	7.1	7.1	7.1	7.1
Heat Pump (@17F)	Heating Capacity	BTU/hr	12000	12200	12200	13800
	Input Power	Watts	1670	1700	1700	1925
	COP	COP	2.1	2.1	2.1	2.1
Heat Pump (@5F)	Heating Capacity	BTU/hr	10300	11000	11000	11000
	Input Power	Watts	1680	1790	1790	1790
	COP	COP	1.8	1.8	1.8	1.8
Electric Heat	Capacity	BTU/hr	13900/17000	13900/17000	20000/24500	20000/24500
	Input Power	Watts	4.2/5.1	4.2/5.1	6.1/7.4	6.1/7.4
	Current	Amps	20.2/22.2	20.2/22.2	29.3/32.2	29.3/32.2
	Min Circuit Amps (MCA)	Amps	30	30	45	45
	MOP Fuse Amps	Amps	30	30	45	45
	Electrical Plug	NEMA	6-30P	6-30P	Hardwired	Hardwired
Outdoor Ambient Temp	Cooling	°C	15-48	15-48	15-48	15-48
		°F	59-118	59-118	59-118	59-118
	Heating	°C	-15-27	-15-27	-15-27	-15-27
		°F	5-81	5-81	5-81	5-81
Gross Weight	Shipping Weight	lbs	238	238	238	238
Net Weight	VTAC Weight	lbs	207	207	207	207
Sound	Indoor Sound Level (@230V)	dB(A)	50-63	53-66	53-66	53-67

## Access Panels

### Accessories:

- Access Panels
- Wall Plenum
- Return Air Grilles
- Drain Pan



ACC20ACCESSPANEL\_BASIC

ACC20ACCESSPANEL\_PREMIUM

## Wall Plenum



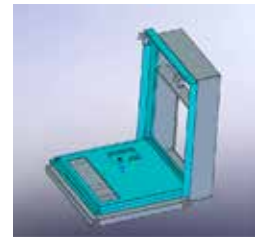
ACC20VTACSLEEVE\_6D/8D/12D/15D

## Return Air Grilles



ACC20RETURNGRILLE\_PREMIUM

## Adapter Kit



ACC20DRAINPANKIT

Applied Comfort Products Carver Inc.

1210 Balmoral Rd. Cambridge, Ontario N1T 1A5.  
Toll Free: 1-877-227-7822  
[ptacs.com](http://ptacs.com)

Every effort has been made to ensure descriptions are correct at the time of print. Errors and omissions excepted. VTAC|V2|03/2026

